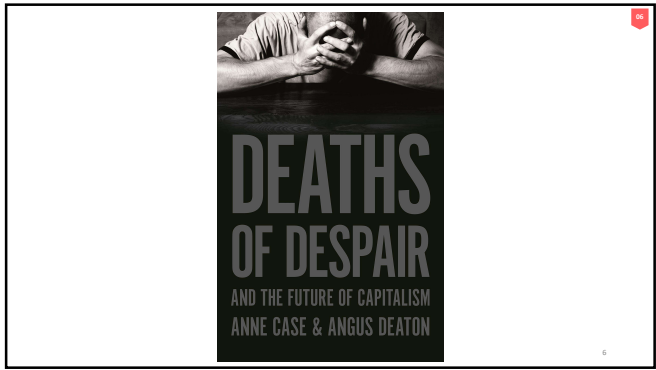
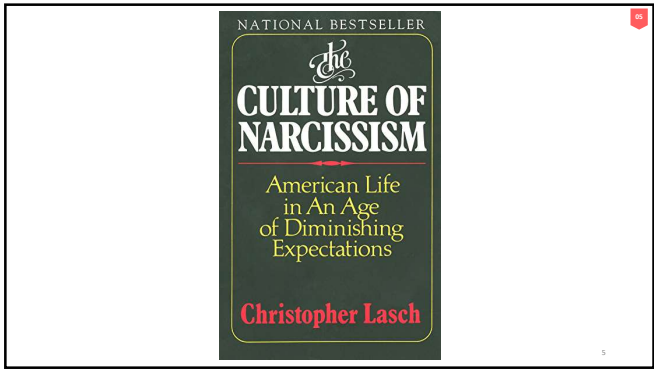
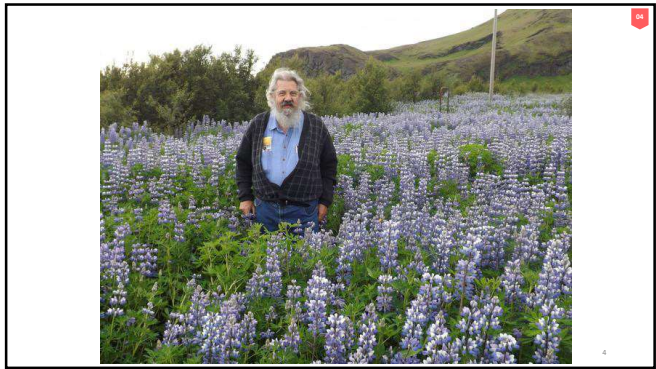
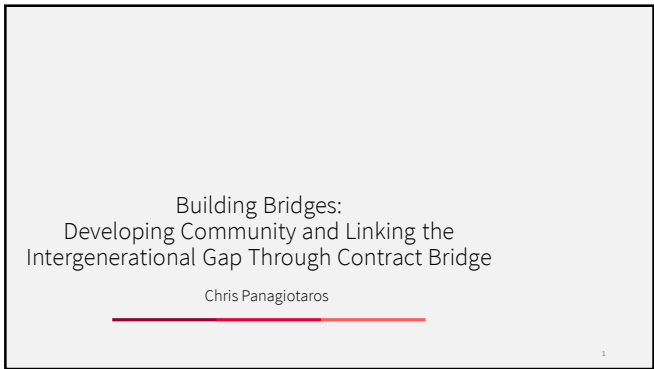
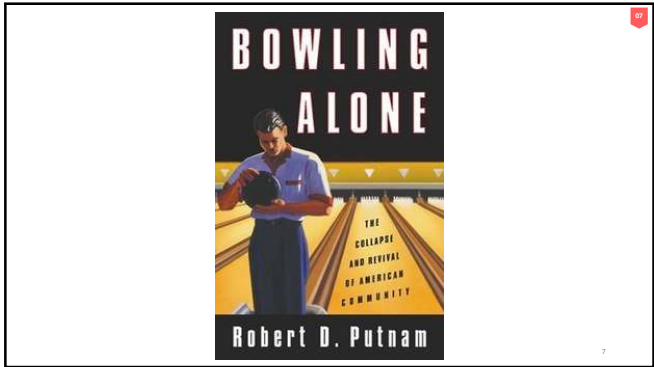
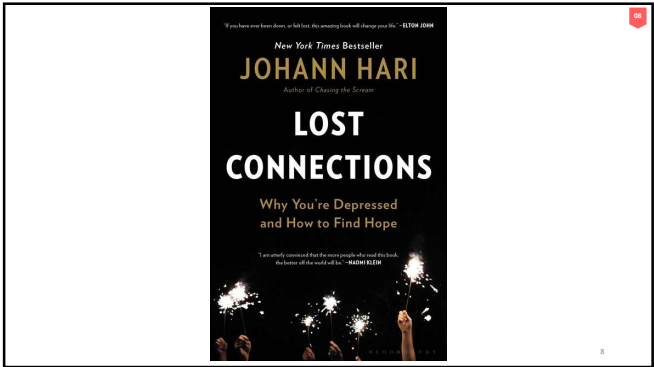


# Building Bridges by Chris Panagiotaros





7



8



9




10

Once the communities that gave working class life ballast (such as unions, churches, clubs) became eroded, agential influence – and meaning – became weakened

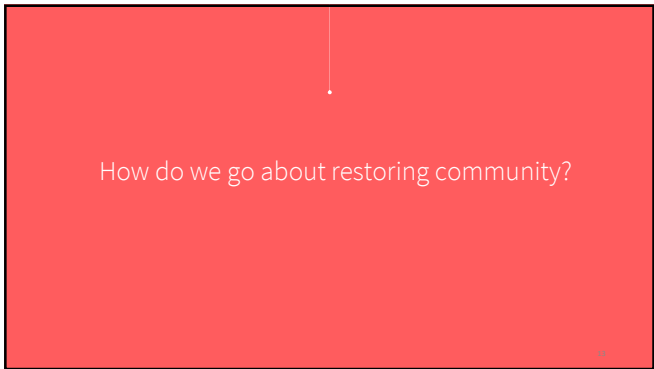
11

We are caught in an inescapable network of mutuality... Whatever affects one directly, affects all indirectly



- Martin Luther King Jr.

12



13



14



15



16